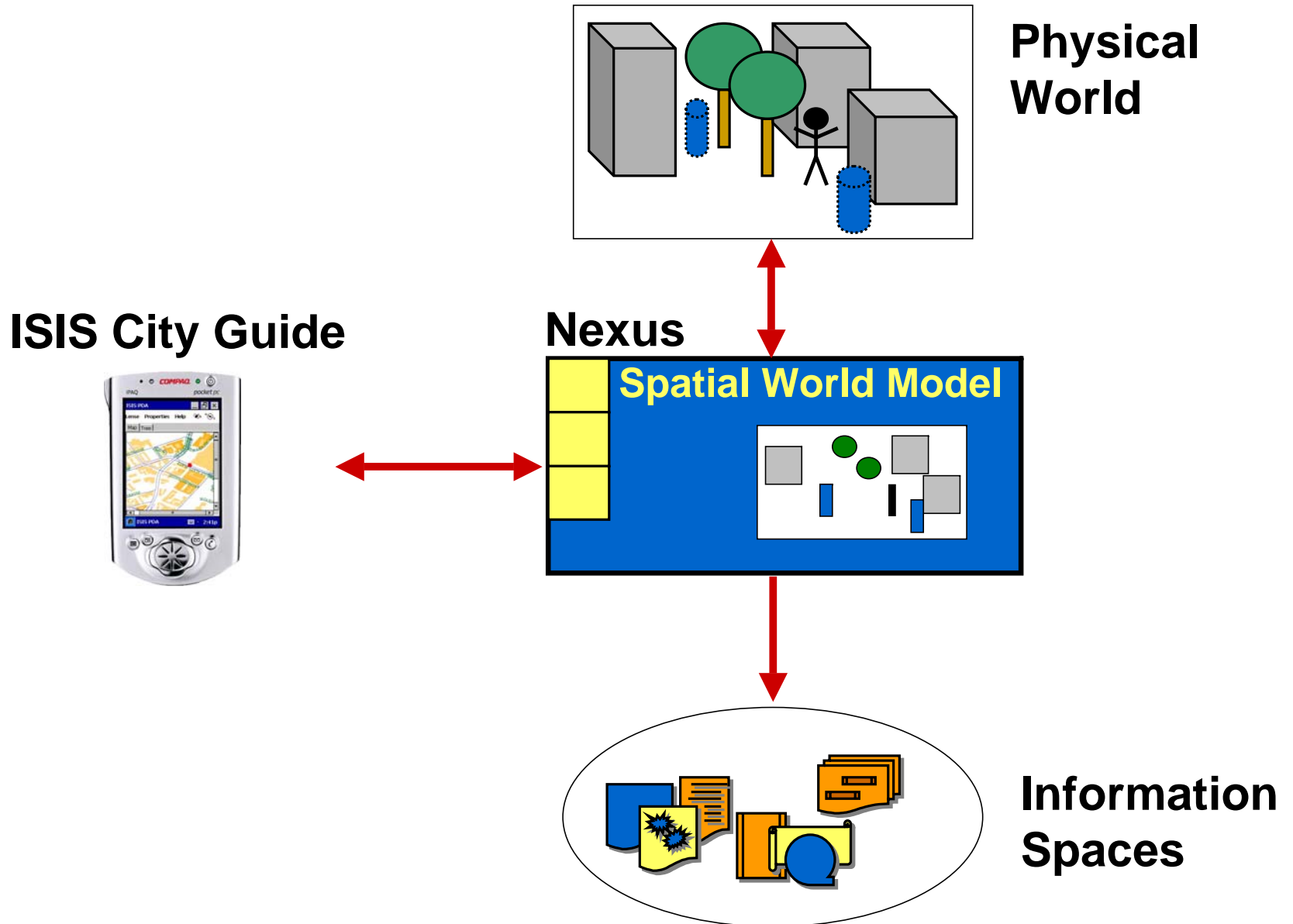


ISIS

A City Guide Based on the Nexus Platform

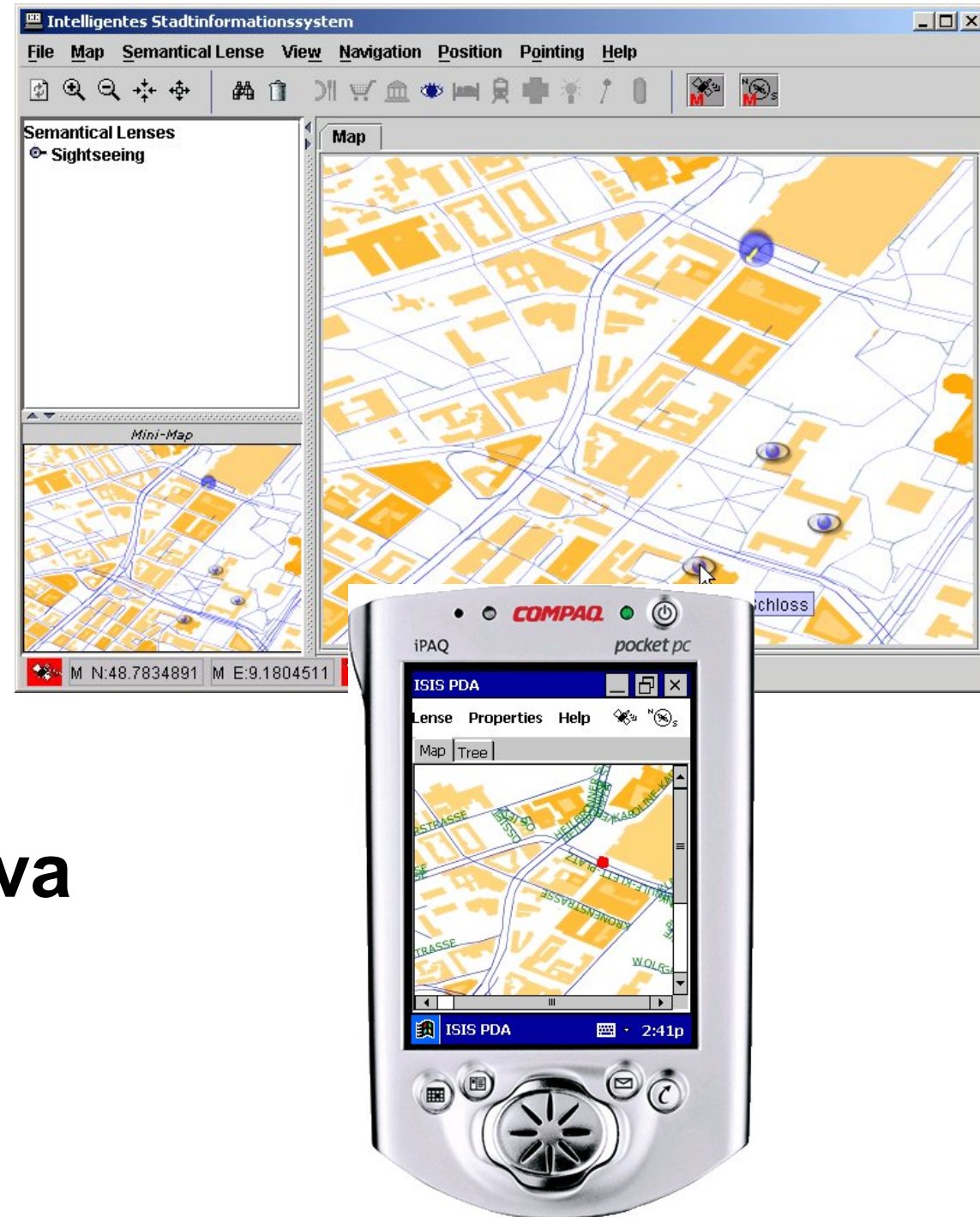


Overview

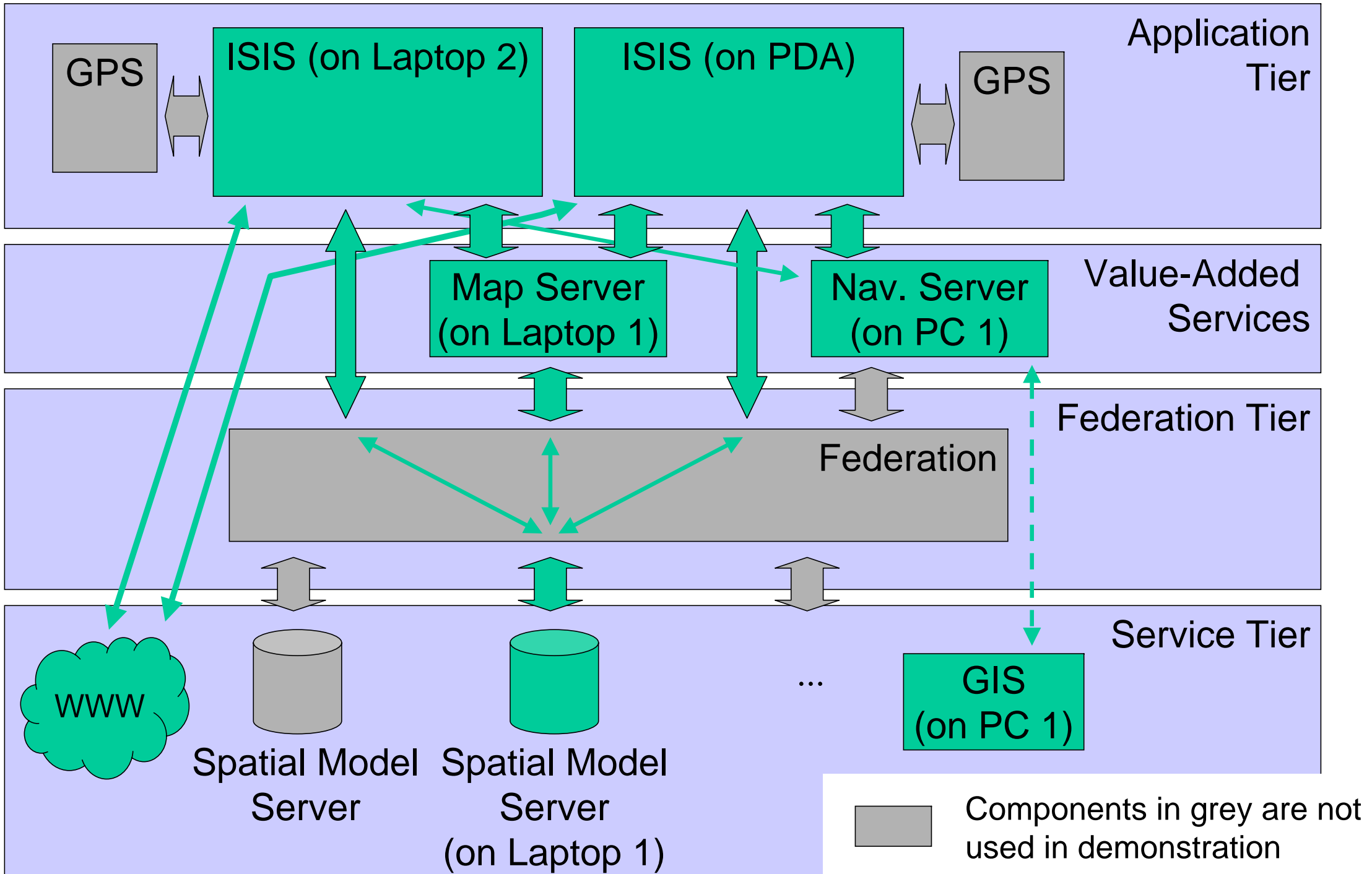
ISIS:

A City Guide for Stuttgart

- Builds on Nexus Platform
- Target Devices:
 - Laptop/Tablet PC
 - PDA (iPAQ)
- Implemented in Pure Java
- Developed by Study Project (6 Students)

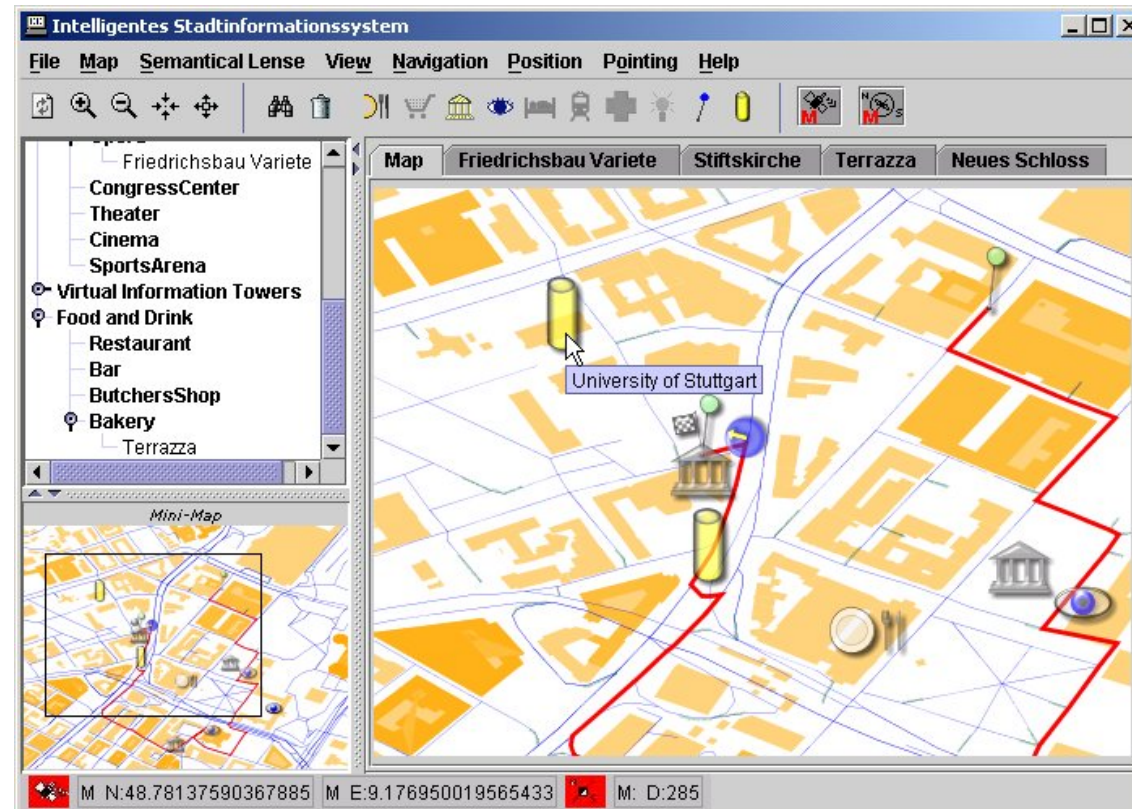


Architecture



Maps

- **Generated by Nexus Map Service**
 - Streets
 - Buildings
 - Points of Interest (Restaurants, Sights, ...)
 - Virtual Information Towers
- **Formats**
 - Laptop: Vector Graphics (SVG)
 - PDA: Bitmap



Information Access

- **Predefined Queries Specific to City Guide**
 - Food & Drink
 - Culture & Events
 - Sights
 - Accomodation
 - Traffic Information
 - etc.
- **Arbitrary Expert Queries**
- **Pointing with Electr. Compass**

The screenshot shows a desktop application titled 'Intelligentes Stadtinformationssystem'. The interface includes a menu bar (File, Map, Semantical, Lense, View, Navigation, Position, Pointing, Help), a toolbar with various icons, and a main content area. On the left, a tree view under 'Sightseeing' lists 'SightseeingObject', 'SightseeingBuilding' (with sub-items 'Kunstgebaeude', 'Neues Schloss', and 'Altes Schloss'), 'Culture and Events', 'Church', and 'Opera'. A 'Mini-Map' is visible at the bottom left. The main area displays details for 'Neues Schloss', including its type ('Palace', 'Ancient Buildings'), a description in German, and visiting hours ('nur Sondernuehrungen'). The status bar at the bottom shows coordinates: M N:48.77849000954029, M E:9.180715038168728, and M: D:285.



Virtual Information Towers (VIT)

- Link Information (Web Pages) to Locations
- VIT has Range of Visibility

The image displays two screenshots of the 'Intelligentes Stadtinformationssystem' (Intelligent City Information System) interface, illustrating the Virtual Information Tower (VIT) concept.

Left Screenshot: Shows a map view of the University of Stuttgart area. A yellow VIT tower icon is visible on the map, highlighted by a green callout box labeled "Visible VIT". The interface includes a menu bar (File, Map, Semantical Lense, View, Navigation, Position, Pointing, Help) and a sidebar with categories like "Food and Drink", "Bar", "ButchersShop", and "Bakery".

Right Screenshot: Shows the same map view, but with the "Semantical Lenses" panel open. This panel displays a tree structure of information categories, including "Sightseeing", "Culture and Events", and "Opera". A green callout box labeled "Poster Hierarchy of VIT" points to a detailed view of the "University of Stuttgart" VIT. This view shows a "neXus-Class" and a "posterListAddress" with fields for "address", "expires", "owner", and "pHierarchyAddress". The "pHierarchyAddress" field displays a tree structure of information categories, including "siteplan", "General Information", "research activities", "information for international students", "entertainment", and "K4 - der Kulturkeller (german)".

Navigation

Based on Nexus Navigation Service

- Currently: Wrapper of GIS

- Future Work:

- Native Nexus Service

- Support of Multimodal Transportation

